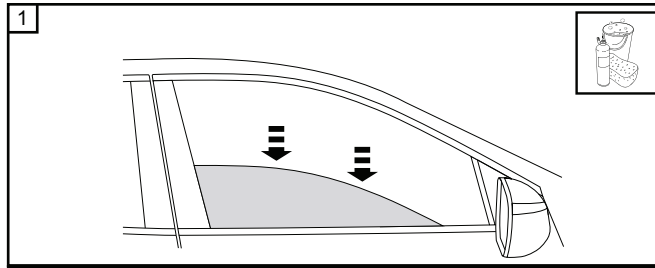
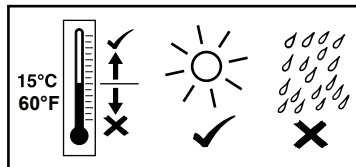
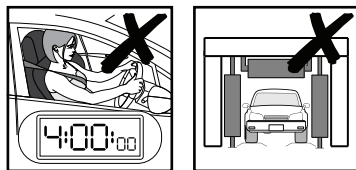
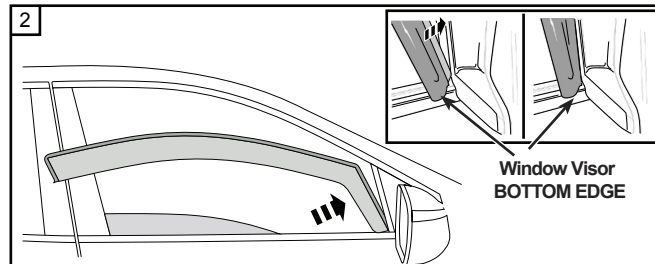


FRONT VISOR INSTALLATION INSTRUCTIONS

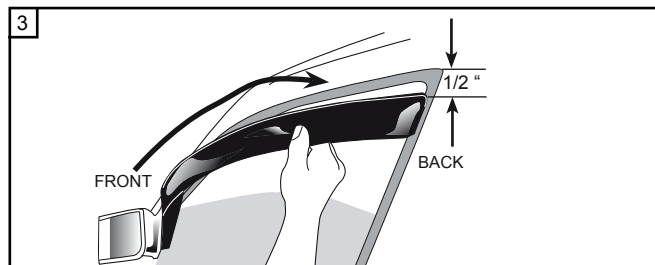
Tools Required



1
Clean and dry the vehicle. Lower the front windows completely.

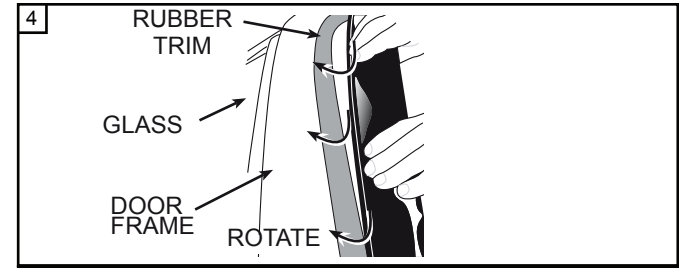


2
Fit the front section of the Window Visor behind the mirror base. Ensure the bottom edge of the Window Visor locates on top of or over the lower window molding, as shown.



3
Fit rear section of Window Visor into channel about 1/2 inch away from the top of door frame, as shown.

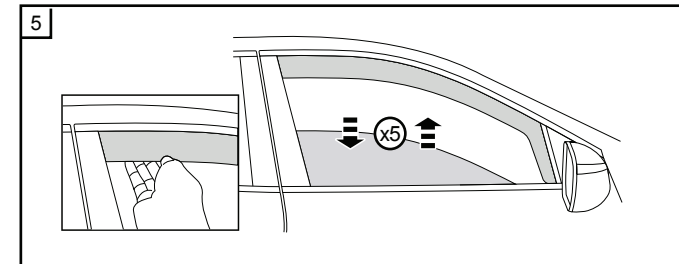
IMPORTANT:
When fitting the Window Visor it will be necessary to bend the center of the Window Visor away from the vehicle to enable fitment. CARE MUST BE TAKEN AS THE PRODUCT COULD BREAK.



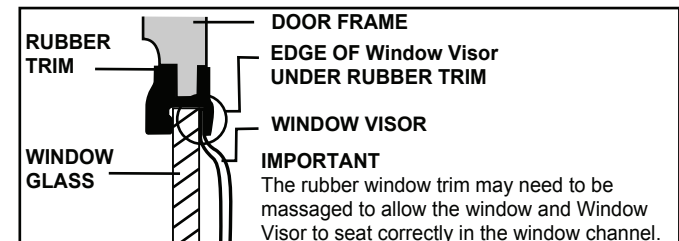
4
Start inserting the Window Visor by carefully rotating the Window Visor into the window channel.

IMPORTANT

Working from the front of the Window Visor to the back as shown. Once installed gently push the Window Visor upwards into the window channel.



5
Ensure the Window Visor is located in the outermost section of the rubber window channel. Pull the bottom of the Window Visor outwards at the rear of the part while raising and lowering the window a minimum of 5 times to help seat the Window Visor into the rubber window channel.



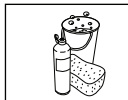
IMPORTANT
The rubber window trim may need to be massaged to allow the window and Window Visor to seat correctly in the window channel.

NOTE:

If vehicle does not have rear windows installation is complete, disregard page 2 of fitting instructions.
If vehicle has rear windows, continue to page 2.

REAR VISOR INSTALLATION INSTRUCTIONS

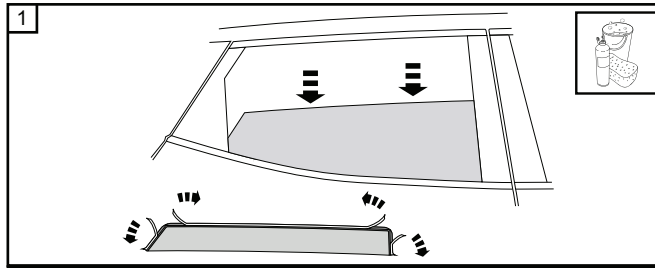
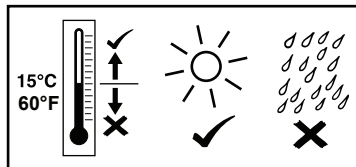
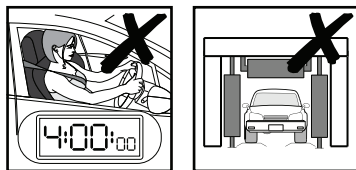
Tools Required



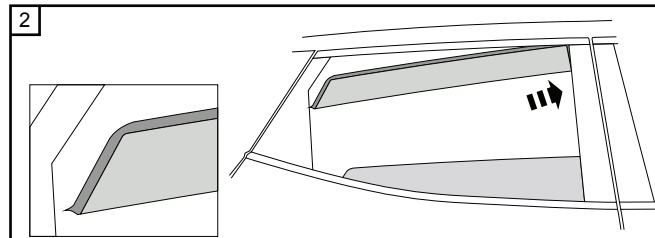
Soap & Water



Clean Dry Cloth

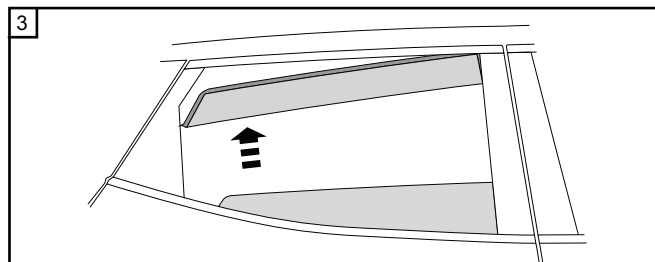


1 Clean and dry the vehicle. Lower the rear windows completely. Remove the tape liner from the double-sided tape attached to the Window Visor.

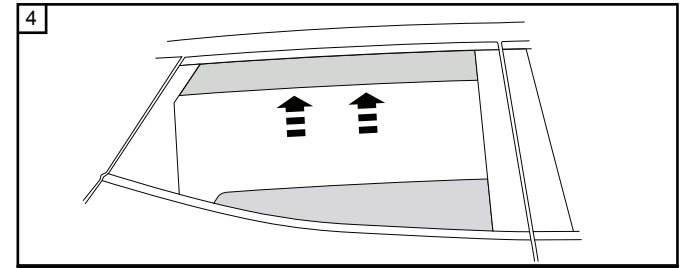


2 Fit the front section of the Window Visor into the rubber window channel, as shown.

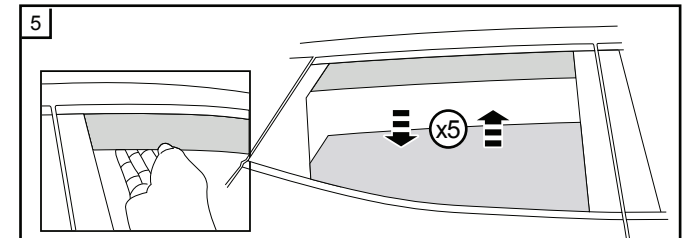
The half notch at the end of the Window Visor indicates the rear end of the Window Visor.



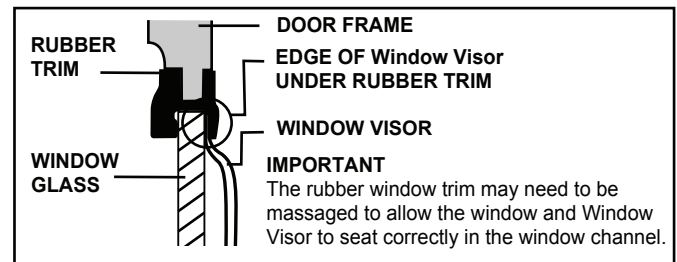
3 Position the rear section of the Window Visor into the rubber window channel.



4 Work the Window Visor into the rubber window channel by hand, ensuring it locates securely.



5 Ensure the Window Visor is located in the outermost section of the rubber window channel. Pull the bottom of the Window Visor outwards at the rear of the part while raising and lowering the window a minimum of 5 times to help seat the Window Visor into the rubber window channel.



To Clean:

- Use mild detergent and water solution
- Do not use solvents
- Avoid the use of automatic "Brush Style" car washes